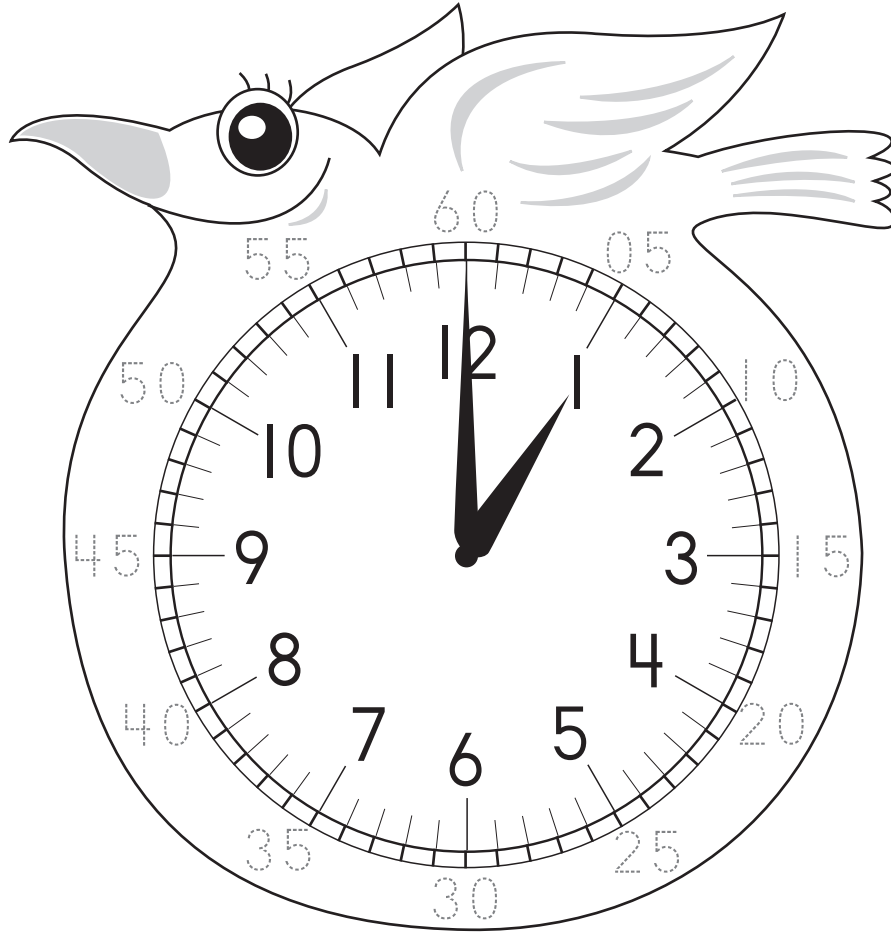
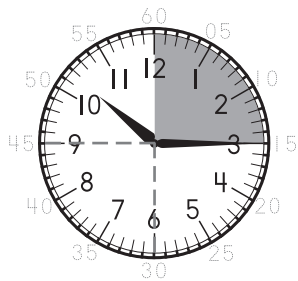


The long minute hand moves around a clock face to measure the 60 minute hour. Each time the minute hand moves to the next numeral on the clock face, 5 minutes have passed. Trace the numbers as you count by 5.



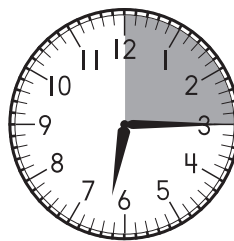
The long minute hand shows that a quarter past the hour is 15 minutes past the hour. Finish the sentences next to the clocks.



The clock reads

or

a quarter past _____.



The clock reads

or

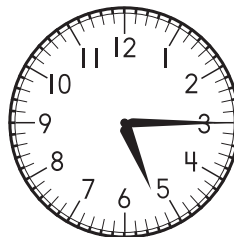
a quarter past _____.



The clock reads

or

a quarter past _____.



The clock reads

or

a quarter past _____.